



A Weekly Update For The Employees of North Central Health Care



# NEWS YOU CAN USE



## WEEKLY CONNECTION WITH JASON HAKE

### Summer Season is Budget Season

There is no denying that the warm weather we have been experiencing has been more than delightful, and it can only mean one thing. Not just that summer is officially around the corner, but also, it is budget season! In the finance world, budget season is a thrilling rollercoaster ride, filled with twists, turns, and the occasional financial freefall. It's also an opportune time to reflect

on one of our Core Values – **Partnership**. Our success as an organization depends on the collaborative efforts of our employees, departments, and external stakeholders, all while reinforcing our commitment to Person-Centered Service.

If you haven't already guessed, budget season is my favorite time of year. The budget process goes way beyond the stereotypical thought of just being stuck in a conference room arguing over numbers until the wee hours of the morning. It is a creative process that provides an opportunity to partner with each department to learn about their programs, services, opportunities, challenges, and visions for the future.

Although we are early in the budget process, there is one theme that has stood out thus far. Our unflinching commitment to Person-Centered Service despite many of our departments struggling with staffing challenges. This perseverance could not be accomplished without the commitment of our employees and the **partnerships** we have forged. Spreadsheets are a favorite of mine, but they simply do not capture the accomplishments of our departments and the commitment of our employees. Employee commitment is the invisible ink on spreadsheets, impossible to capture but essential to achieve our mission.

Thank you all for your hard work and commitment to NCHC. Enjoy your summer!

**Jason Hake**  
Managing Director of Finance and Administration



**This Thursday, June 15: Wear Purple & Jeans for Elder Abuse Awareness Day!**

**This Friday, June 16: Wear Your Favorite NBA Sports Gear & Jeans! It's NBA Finals This Week!**



### Occurrence Reporting Hotline

**x4488 or 715.848.4488**



Only significant or sentinel events requiring immediate notification to this hotline.

Employee Updates..... **4**

Wear Purple & Jeans on June 15..... **3**

Frontline ..... **4**

Community Events..... **6**

Employees On the Move! ... **8**



**Jamie Collins, Residential**

Thank you for working a shift due to a call-in.

From: Danielle

**Brandon Uttech, Security**

Supplied the unit with items we need to do our jobs well (chocolate!). Thank you!

From: Sydney & Grace





# 2023 2nd Quarter EMPLOYEE UPDATES



**Presented by**  
**Gary Olsen,**  
Executive Director



**Scan with Your  
Smartphone  
Camera App to Register!**



**Please Register in UKG Learning!**

Employees can make arrangements to attend one of the in-person sessions by registering in UKG Learning. PLEASE BE SURE TO PUNCH IN WHEN YOU ARRIVE TO MEETING. The session will also be recorded if you are unable to attend and will be available after the final session.

## Person-Centered Service **REBOOT!**



*Special session to re-energize our commitment to Person-Centered Service and focus on Core Values!*

**MON, JUNE 26 ANTIGO CENTER**  
3 pm Conference Room

**TUES, JUNE 27 WAUSAU CAMPUS**  
6:15 am MVCC 1st Floor  
Community Room

**THURS, JUNE 29 WAUSAU CAMPUS**  
10:30 am MVCC 1st Floor  
Community Room

**MON, JULY 10 PINE CREST**  
2 pm Chapel Area  
**MERRILL CENTER**  
3:30 pm Conference Room

**TUES, JULY 11 WAUSAU CAMPUS**  
12 Noon MVCC 1st Floor  
Community Room  
5 pm MVCC 1st Floor  
Community Room



# Wear Purple this Thursday to support the cause!

On Thursday, June 15, supporters of World Elder Abuse Awareness Day (#WEAAD) around the globe wear purple to show they care about ending elder abuse and neglect. This day provides an opportunity for communities around the world to promote a better understanding of abuse and neglect of older persons by raising awareness of the cultural, social, economic and demographic processes affecting elder abuse and neglect. Join us this Thursday, June 15th in wearing purple!



## AWESOME CARS, GREAT EVENT MVCC Car Show Success

The MVCC Car Show was once again a HUGE hit and success as residents, families and staff enjoyed classic cars of all genres. Thank you to all those who brought a car for the show and for your support at the Ice Cream Sundae fundraiser to raise funds for the Walk to End Alzheimer's!



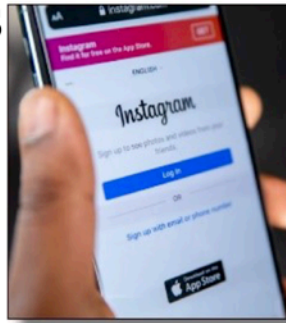
**MORE  
Photos on  
Our NCHC  
Facebook  
Page!**





## Guidance on Social Media Use for Teens

**T**he American Psychological Association (APA) has issued recommended guidelines for parents and educators concerning use of social media by teens entitled “American Psychological Association Health Advisory on Social Media Use in Adolescence,” it offers ten recommendations. Example: Adolescents’ social media use should be preceded by training in social media literacy to ensure that users have developed psychologically informed competencies and skills that will maximize the chances for balanced, safe, and meaningful social media use. The APA recommends education and training to help prevent toxic effects of social media use. They equate the idea of educating teens in the use of social media with educating teens before they can drive a car.



Learn more at [www.apa.org/topics/social-media-internet/health-advisory-adolescent-social-media-use.pdf](http://www.apa.org/topics/social-media-internet/health-advisory-adolescent-social-media-use.pdf).

## Moderate Drinking and Risk of Cancer

**T**he U.S. Centers for Disease Control, the American Cancer Association, and the International Agency for Research on Cancer recognize that regular or heavy alcohol consumption raises one’s risk for at least six types of cancer: breast, colorectal, liver, neck, esophageal, and pancreatic. Why, and what’s going on? Use of alcohol exposes your body to a toxin called acetaldehyde when the liver does its job of breaking down alcohol. Like tobacco smoke, acetaldehyde is classified as a Level 1 carcinogen. It can damage DNA. So, the more exposure, the higher the risk. It’s why several years ago, these organizations agreed that more than one drink per day for a woman and more than two drinks per day for a man is considered risky or heavy drinking. Genetics and other factors may contribute to the risk of cancer as well.



Source: [www.cancer.org](http://www.cancer.org) [search alcohol, cancer, acetaldehyde]

### LOOKING FOR AN NCHC MAP OR OTHER INFORMATION?

Check the [ODrive](#) or [For Employees Page of Our Website](#)

The Communications Department frequently gets questions regarding maps and information.

If you are looking for anything like Maps, YOU Benefit Guides, Connections Guides, etc., please check the Odrive > NCHC Information folder OR the For Employees Page of our Website at [www.norcen.org/ForEmployees](http://www.norcen.org/ForEmployees).

In both places, you will find a lot of commonly requested information including the most updated maps (general and snow maps), YOU Benefit Guides, Quality & Compliance Information, and Important Contact information.

As always, if you are looking for something specific and you don’t see it in the resource locations above, send us an email at [communications@norcen.org](mailto:communications@norcen.org) and we will answer back as soon as we can. Your feedback helps us improve the resources available for our teams! Thanks for all you do!



### MERRILL CENTER AC FIXED Back to Normal Operations

The Merrill Outpatient and Community Treatment programs will be resuming normal operations back at the NCHC Merrill Center beginning Tuesday, June 13. The air conditioning has been restored and staff will be working today to move operations back to 607 North Sales Street, Suite 309 in Merrill.

Thank you to the Lincoln County team for their partnership and collaboration with the temporary location and to our NCHC staff for their flexibility and commitment to Person-Centered Service!



PHOTO OF THE WEEK



**EACH JUNE IS NATIONAL SAFETY MONTH!**

Safety matters every day of the year, but during June it gets the extra attention it deserves so we can all stay safe from the workplace to anyplace. Safety needs to be 24/7. In honor of National Safety Month, last week employees wore orange to show their support! Thanks for the great photos!



A Monthly Gab Session with Executive Director, Gary Olsen

**JUNE GAB SESSION:  
OUTPATIENT SERVICES**

Each month, Gary Olsen will select a manager to participate in Gabbin' with Gary! That manager will be asked to invite one employee from their program to join in. The trio will connect over lunch. The topic? *It's up to you!*

Inspired by Core Values & Committed to Person-Centered Service!



# Community EVENTS

**HONG WAUSAU Festival**  
JULY 29-30, 2023

- People's Sports Complex  
602 E. Kent Street  
Wausau, WI 54403
- (715) 842-8390
- hmongwausaufestival@gmail.com
- Vendor Coordinator  
Deborah Lee (715) 842-8390  
deborahlee@hmongamericancercenter.org

**JUNETEENTH Freedom Day**  
Saturday, June 17th  
Celebrate in Wausau at  
Whitewater Music Hall  
5 PM-9 PM

**FREE FILM VIEWING OPPORTUNITY**  
Brought to You By: Marathon County AOD Partnership & Nicotine Prevention Alliance of Central WI

**SCREENAGERS UNDER THE INFLUENCE**  
Addressing Vaping, Drugs & Alcohol in the Digital Age

WHEN: View Any Time June 4 – June 17  
WHERE: On Demand | Register for Free [HERE](https://www.eventcombo.com/e/screenagers-under-the-influence-presented-by-marathon-county-68146) or Scan QR Code  
AUDIENCE: Anyone May Attend, Including Youth 6<sup>th</sup> Grade & Up With Parents

**SUMMER FOOD SERVICE PROGRAM**  
SUMMER FUN!

Healthy meals for kids and teens. **FREE!**  
No need to sign up or apply—just show up and enjoy!

**Location and Time(s) of Meals:**  
June 7<sup>th</sup> – July 20<sup>th</sup>  
(No Meal Service July 3<sup>rd</sup> or 4<sup>th</sup>)  
Wausau East High School (Mon – Thur)  
Breakfast 7:15 – 8:15 a.m. Lunch 11:00 – 11:30 a.m.

**Contact:**  
Wausau School District  
Nutrition Services  
715-261-0806

**More Info:**  
[wisummerfood.org](http://wisummerfood.org) or call 211  
Text: 'food' to 304-304 for meals near you.

This Institution is an equal opportunity provider.

Summer Food Service Program  
Wisconsin Department of Public Instruction

## SUMMER FOOD SERVICE PROGRAM

The Wausau School District will once again be offering a summer food meal program for any students aged 18 and under. Students who are hungry can grab breakfast between 7:45 and 8:15 a.m. in the morning, and make a trip for lunch from 11:15 a.m. to 12:15 p.m. Every elementary school in Wausau will be serving meals.

DC Everest School District are also offering a similar program at the DC Everest Junior High School, Mountain Bay Elementary and Weston Elementary Schools.

The Summer Food Service Program (SFSP) is a federally-funded, state-administered program that reimburses program operators who serve free healthy meals and snacks to children and teens in low-income areas during the summer months, when children do not have access to school meals.

## SCREENAGERS UNDER THE INFLUENCE

Addressing Vaping, Drugs, and Alcohol in the Digital Age

The third feature documentary in the Screenagers trilogy, delves into how the tech revolution has reshaped adolescence and its effects on substance use. Watch the trailer: <https://www.youtube.com/watch?v=dR7uxuFqatY>

The film debunks myths and depicts strategies parents and schools can use to encourage healthy decision-making, support teen mental health, set limits, and create healthy home environments. The film also includes many ways young people are using their wisdom and strength to help each other and themselves through this complicated terrain around substance use.

Like the first two Screenagers films, Screenagers Under The Influence interweaves cutting-edge science with personal stories to create an informative and entertaining film experience for young people and adults alike. Screenagers Under The Influence focuses on practical solutions for keeping our teens safe in a changing world.

Register online to view for FREE June 4 - 17 at <https://www.eventcombo.com/e/screenagers-under-the-influence-presented-by-marathon-county-68146>



Photo submitted by Jamie Collins

## REMEMBERING OUR COWORKER

### Andrew Dallman

Andrew Dallman worked in Residential Services for 19 years, and passed away unexpectedly on December 9, 2022 after fighting a hard battle with a heart condition. This summer, a memorial banner was hung in Wausau honoring those who have served in our military. A photo of Andrew's banner was sent in by his team in Residential to honor him.

*"Our team at Riverview still think of Andrew often and just wanted to share his veteran banner is now displayed on Grand Avenue."*



Marathon County Employees Credit Union

**Not Already a Member?  
Open an Account at MCECU Today!**



**This isn't the best place to keep your money.**

**MCECU is a Full-Service Credit Union that Offers Products and Services to Fit All Your Needs! We Have Great Rates, Smiling Faces, and Top-Notch Customer Service. Our Members Are Our Top Priority!**

**Proudly Serving NCHC Employees and Their Family Members Since 1965.**

www.mcecu.org • cuteller@co.marathon.wi.us  
715-261-7680 • 400 East Thomas Street

# June 2023 Organizational Learning Modules



Each month staff are assigned 30-60 minutes of organizational training that needs to be completed by the due date.

Log into the learning management system (LMS), *UKG Pro Learning*, to complete the following training modules:

- **Emergency Preparedness and Response (2023)** (30 minutes)
- **Complete any outstanding assignments**



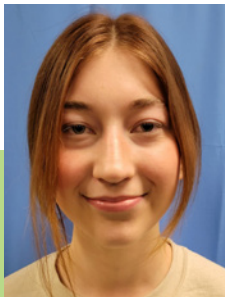
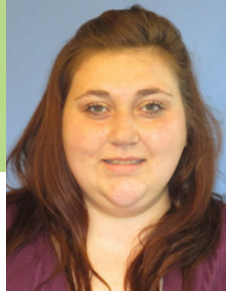
North Central Health Care  
Person centered. Outcome focused.



# employees on the move

Congratulations to these employees for their recent transfer or promotion!

**Angela Liebers** transferred from Hospitality Assistant to CNA at Pine Crest. Her supervisor is Natasha Sayles, and her effective date was 05/28/2023.



**Alayna Amundson** transferred from Hospitality Assistant to CNA at Pine Crest. Her supervisor is Bette Lloyd, and her effective date was 05/28/2023.

# congrats!

## North Central Health Care and Aspirus Women's Health have teamed up to offer your annual mammogram right onsite!

July 13, 2023  
appointment is required



3D mammography is available and covered by North Central Health Care's Health plan benefits.

- Note: You will need 3D CPT codes: screening mammogram 77067 and 77063

For an appointment, call Aspirus Central Scheduling at 866.672.5133. Tell them you want a North Central Health Care appointment. An order from your health care provider is not needed.

### You will be asked to provide:

- The name of your physician or nurse practitioner to receive results
- Insurance information
- The location(s) of your prior mammograms



## NEED EXTRA OFFICE SUPPLIES? Stop By Wausau Copy/Mail Room



If any employees are looking for additional office supplies, the Purchasing Team is clearing out supplies in the storage area to make room for their move to the new Purchasing area. Extra supplies like file folders, envelopes, staplers, etc. can be found in the Copy/Mail Room located just past the double doors by Human Resources. You can always call down to x4452 and ask to see if we have something you need!

# HRinsights

## Position Posting

**Title:** Registered Nurse – Hospital

**Status:** Full Time

**Location:** Wausau

Professional nursing work involving the delivery and supervision of patient care under the direction of the Nurse Manager. The employee performs the full scope of professional nursing functions within the parameters of professional licensure and standards of practice.

**Apply Online:** <https://bit.ly/42ghzPA>

**Title:** Crisis Professional - PM Shift

**Status:** Full Time - 12 Hour Shifts

**Location:** Wausau

Provide crisis intervention, crisis counseling for individuals and families, referral and short-term follow-up, and collaborative community consultation, and education. Perform crisis line risk assessments to evaluate and triage to the most appropriate treatment setting. Full Time 0.9 FTE (72 hours per pay period) PM works every other weekend and holiday.

**Apply Online:** <https://bit.ly/3FYJZoY>

Not sure if its the right fit? Check out the Realistic Job Preview at [www.norcen.org/RJP](http://www.norcen.org/RJP)





# WHAT'S FOR LUNCH?

WAUSAU CAMPUS EMPLOYEE CAFETERIA  
OPEN TO ALL NCHC & WAUSAU CAMPUS



<p><b>BREAKFAST HOURS</b> 8:30 AM – 11 AM</p>	<p><b>LUNCH HOURS</b> MONDAY – FRIDAY 11:30 AM – 1:30 PM HOT FOOD BAR \$.45/OUNCE (Weekdays Only)</p>	<p><b>GRAB-N-GO HOURS</b> MONDAY – FRIDAY 8:30 AM – 5:30 PM  <b>WEEKENDS:</b> GRAB-N-GO ONLY</p>
---	---	--

## JUNE 12 – 16, 2023

	MONDAY	TUESDAY	WEDS	THURSDAY	FRIDAY
MAIN	Saucy Chicken & Pasta Buttered Peas Garlic Toast	BBQ Beef on a Bun Buttered Diced Potatoes Green Beans	Ham Steak Baked Sweet Potato Cauliflower	Salisbury Steak Mashed Potatoes/Gravy Steamed Rutabagas	Tilapia with Sour Cream Dill Sauce Baked Potato Mixed Veggies
SOUP	White Bean & Sausage Soup	TBD	Cheddar Baked Potato Soup	TBD	Garden Vegetable Soup
DESSERT	Funfetti Blondie	Seasonal Fresh Fruit	Glazed Lemon Cake	Mandarin Oranges	Strawberry Poke Cake

## JUNE 19 – 23, 2023

	MONDAY	TUESDAY	WEDS	THURSDAY	FRIDAY
MAIN	Bratwurst on a Bun Potato Salad Seasoned Peas	Honey Mustard Chicken Rice Pilaf Pickled Beets	Pork Loin w/ Gravy O'brien Potatoes Mixed Veggies	Mac & Cheese w/ Ham Green Beans	Homemade Chili Cheddar Biscuit Sweet Pepper Slaw
SOUP	TBD	TBD	Chicken Rice Soup	TBD	Cream of Broccoli Soup
DESSERT	Diced Watermelon	Frosted Chocolate Cake	Strawberry Yogurt Pie	Fruit Cobbler	Fruit Cup

# WAUSAU CAMPUS SUMMER FOOD TRUCKS



**Mitch's Texas Tacos**  
Weekly on Thursdays\*  
May 18 through August 31



**HANUMAN EXPRESS**  
Monthly on Fridays\*  
May 19 • June 23 • July 21 • Aug 18

\* Dates are subject to change. Watch for notices via email and NYCU. Please note: Food trucks are independently operated and may cancel with little notice. We apologize for any inconvenience.



# THE BISTRO

MONDAY - FRIDAY | 7:30AM - 3PM  
HOT FOOD AVAILABLE UNTIL 2:30PM

## PANINI OF THE WEEK



### BUFFALO CHICKEN WRAP

BUFFALO CHICKEN | BLUE CHEESE | ONION  
CHEDDAR | PROVOLONE | AMERICAN

## LATTE OF THE WEEK



### Vanilla Chai

**\$1 OFF LARGE  
LATTES EVERY  
MONDAY!**

## Ice Cream

- ICE CREAM CONE .....1.00
- ROOT BEER FLOAT .....2.00



## LUNCH

- PANINI COMBO (1/2 PANINI, CHIPS, WATER) .....5.00
- TURKEY BACON GUAC PANINI .....6.00
- TURKEY BACON GUAC WRAP .....5.75
- 3 CHEESE PANINI (ADD CHICKEN FOR \$1) .....3.50
- GRILLED HAM & CHEESE PANINI ..... 4.50
- GARLIC BACON PANINI ..... 5.00
- CHICKEN BACON RANCH WRAP .....5.25
- CHEESE QUESADILLA (ADD CHICKEN FOR \$1) .....4.50
- CALZONE ..... 4.50/5.00
- CHEF SALAD/CHICKEN SALAD .....5.50

*\*Please note: All sales subject to Sales Tax.*